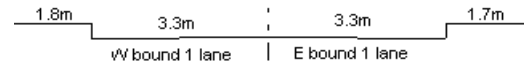


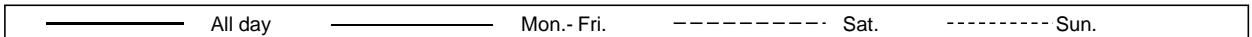
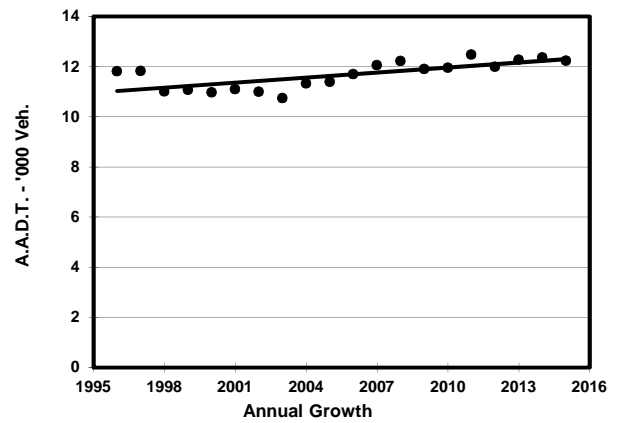
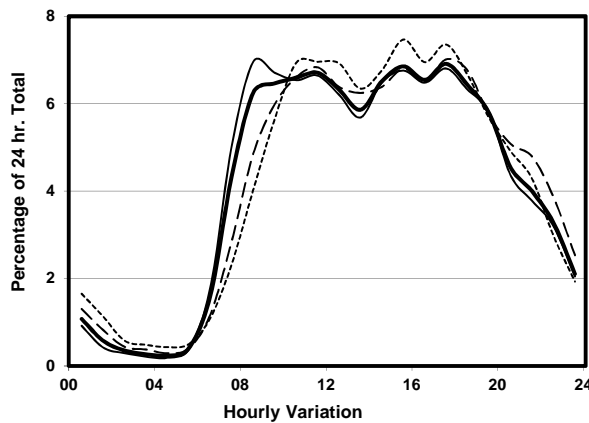
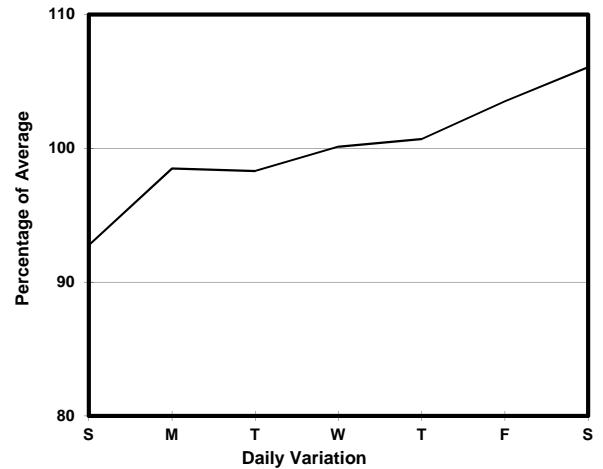
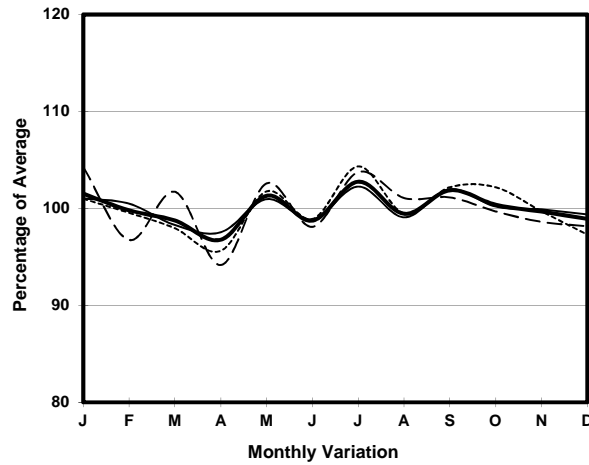
YEAR

2015

LINK PEAK RD (from MT. AUSTIN RD to MAGAZINE GAP RD)

CORE STATION
ROAD NETWORK
ROAD TYPE1014
MAJOR
DISTRICT DISTRIBUTOR

1. TRAFFIC FLOW VARIATION AND GROWTH



2. TRAFFIC CHARACTERISTICS (BY DIRECTION)

Parameter	All - Day	Mon. - Fri.	Sat.	Sun.
EAST BOUND				
A.A.D.T.	5850	5840	6500	5420
R 12 / 24 - %	75.2	76	72.3	74.1
R 16 / 24 - %	93.5	93.8	92.5	92.4
AM Peak Hour	0900-1000	0900-1000	0900-1000	0900-1000
One-way flow at AM peak hour	400	420	420	320
T - % (AM)	-	-	-	-
PM Peak Hour	1800-1900	1800-1900	1700-1800	1600-1700
One-way flow at PM peak hour	390	400	450	390
T - % (PM)	-	-	-	-
Prop.of commercial vehicles - 16 hr.	-	-	-	-
WEST BOUND				
A.A.D.T.	6380	6460	6590	5960
R 12 / 24 - %	76.3	77.1	74.1	74.6
R 16 / 24 - %	93.3	93.7	92.8	92
AM Peak Hour	0800-0900	0800-0900	0900-1000	0900-1000
One-way flow at AM peak hour	390	440	360	320
T - % (AM)	-	-	-	-
PM Peak Hour	1700-1800	1700-1800	1700-1800	1700-1800
One-way flow at PM peak hour	460	470	460	460
T - % (PM)	-	-	-	-
Prop.of commercial vehicles - 16 hr.	-	-	-	-

3. OTHER INFORMATION AND COMMENT